



Cosmic open 2018

Oil Per Board: 40 uL

Oil Pattern Distance: 42 Feet

Volume Oil Total: 21.04 mL

Total Boards Crossed: 526 Boards

Forward Oil Total:

11.64 mL
291 Boards

Reverse Oil Total:

9.4 mL
235 Boards

Notes

	Start	Stop	Loads	Speed	Crossed	Start	End	Feet	T.Oil
1	2L	2R	2	14	74	0.0	1.9	1.9	2960
2	5L	5R	2	14	62	1.9	5.8	3.9	2480
3	7L	7R	2	14	54	5.8	9.7	3.9	2160
4	9L	9R	2	18	46	9.7	14.8	5.1	1840
5	11L	11R	2	14	38	14.8	18.7	3.9	1520
6	12L	12R	1	18	17	18.7	21.2	2.5	680
7	2L	2R	0	10	0	21.2	42.0	20.8	0

	Start	Stop	Loads	Speed	Crossed	Start	End	Feet	T.Oil
1	2L	2R	0	30	0	42.0	38.0	-4.0	0
2	11L	11R	2	22	38	38.0	31.8	-6.2	1520
3	9L	9R	2	18	46	31.8	26.7	-5.1	1840
4	7L	7R	2	14	54	26.7	22.8	-3.9	2160
5	5L	5R	2	14	62	22.8	18.9	-3.9	2480
6	3L	3R	1	14	35	18.9	17.0	-1.9	1400
7	2L	2R	0	14	0	17.0	0.0	-17.0	0

Conditioner:
Type In or Select One

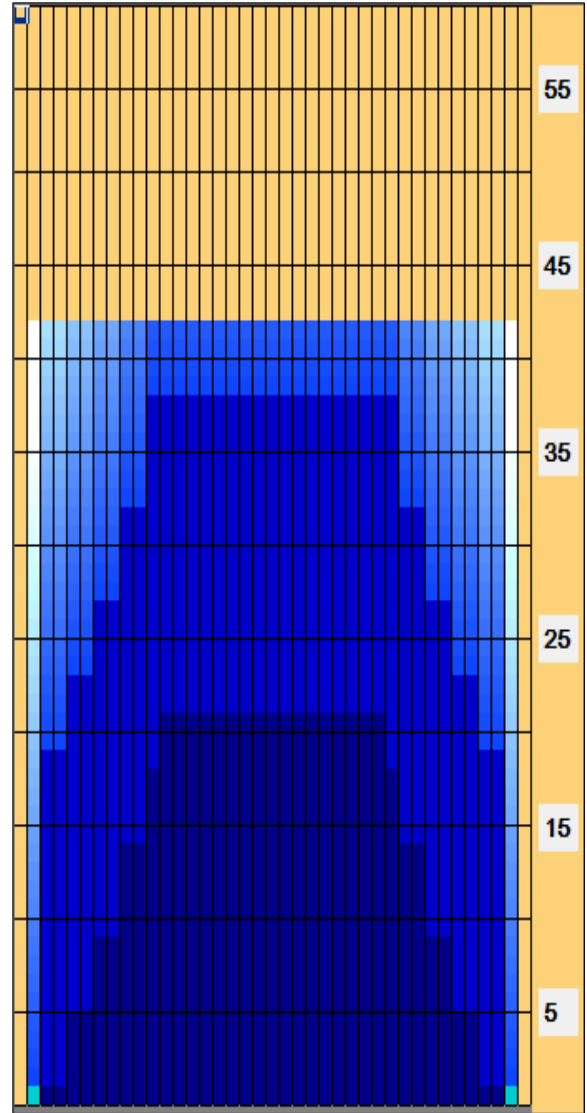
TransferType:
Type In or Select One

Forward

Reverse

Combined

Buff



Arrow Zone Ratios

Item	2-5L:16L-20	6-10L:16:-20	11-15L:16L-20	16L-20:20-16R	16L-20:20-16R	20-16R:15-11R	20-16R:10-6R	20-16R:5-2R
ul Arrow	150	472	792	800	800	792	472	150
Zone Ratio	5.33	1.69	1.01	1	1	1.01	1.69	5.33

Track Zone Ratios

Item	3L-7L:18L-18R	8L-12L:18L-18R	13L-17L:18L-18R	18L-18R:17R-13R	18L-18R:12R-8R	18L-18R:7R-3R
Description	Outside Track:Middle	Middle Track:Middle	Inside Track:Middle	Middle: Inside Track	Middle:Middle Track	Middle:Outside Track
Track Zone Ratio	3.23	1.25	1	1	1.25	3.23

Forward Reverse

